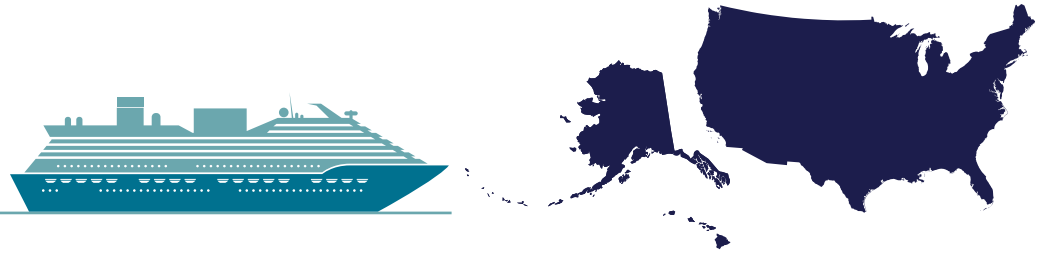


ESTIMATED ECONOMIC IMPACT OF CRUISE SUSPENSIONS



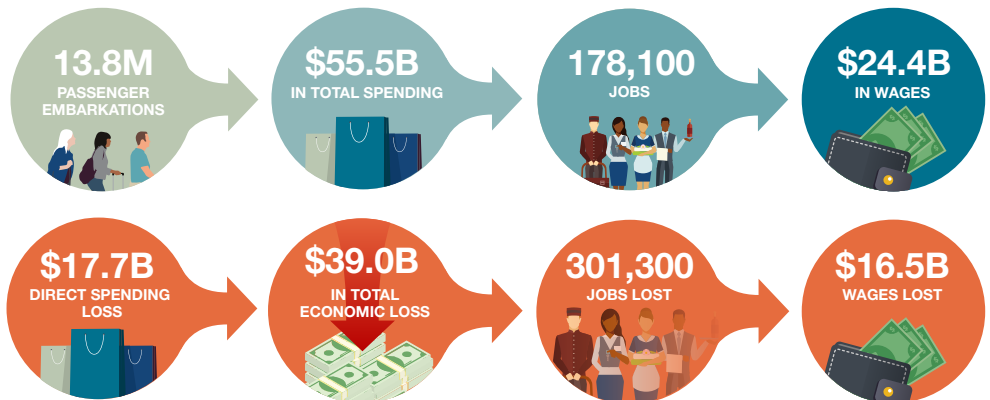
UNITED STATES



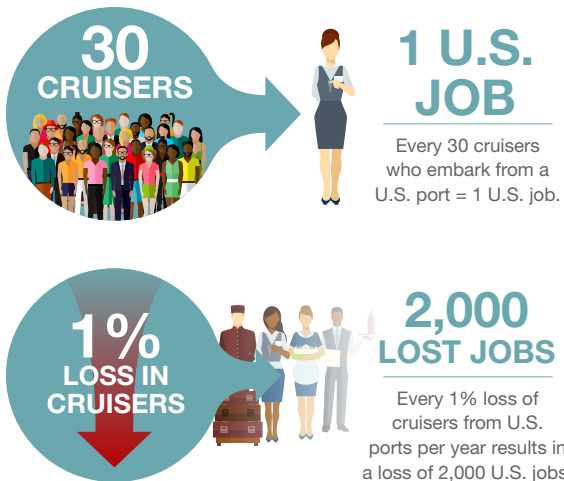
We know that suspending operations was the right thing to do, at the same time, we recognize the devastating impact that COVID-19 has had on our community. That is why the cruise industry brought every force to bear to establish comprehensive prevention, detection and response strategies from the time of booking to disembarkation.

A resumption of cruising in the United States in 2021, with stringent measures in place and with the support of health authorities, will be critical to putting people back to work and fueling the greater economic recovery from the pandemic.

EVERY YEAR, CRUISING GENERATES:

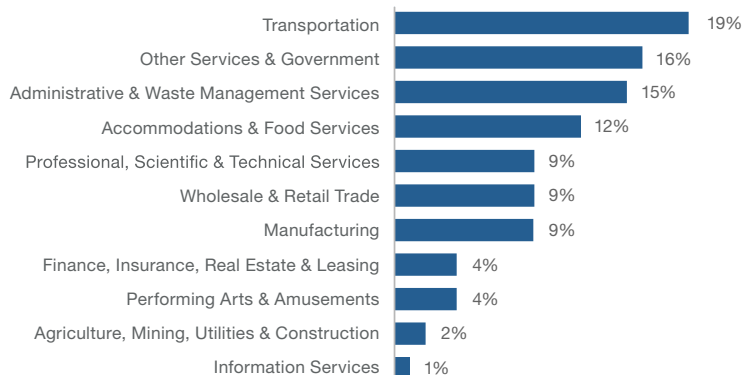


Source: BREA / CLIA 2019 Economic Impact Study



Source: BREA / CLIA 2019 Economic Impact Study

Distribution of Total Employment Impacts – 2019 Total = 436,611 Jobs

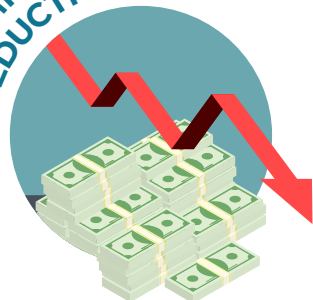


Source: Business Research & Economic Advisors

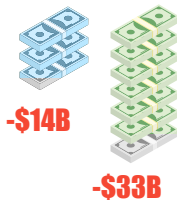
ESTIMATED ECONOMIC IMPACT SINCE SHUTDOWN BEGAN IN MARCH 2020



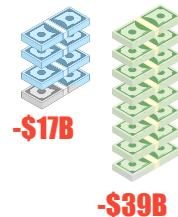
ECONOMIC IMPACT REDUCTION



EOY 2020



MARCH 2021



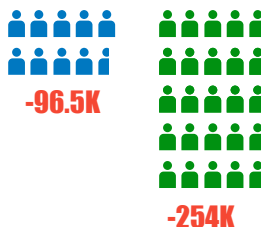
= DIRECT EXPENDITURES

= TOTAL EXPENDITURES

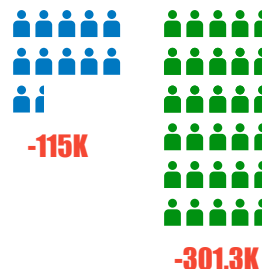
TOTAL JOBS REDUCTION



EOY 2020



MARCH 2021



= DIRECT EMPLOYMENT

= TOTAL EMPLOYMENT

WAGES & SALARIES REDUCTION



EOY 2020



MARCH 2021



= DIRECT WAGES AND SALARIES

= TOTAL WAGES AND SALARIES